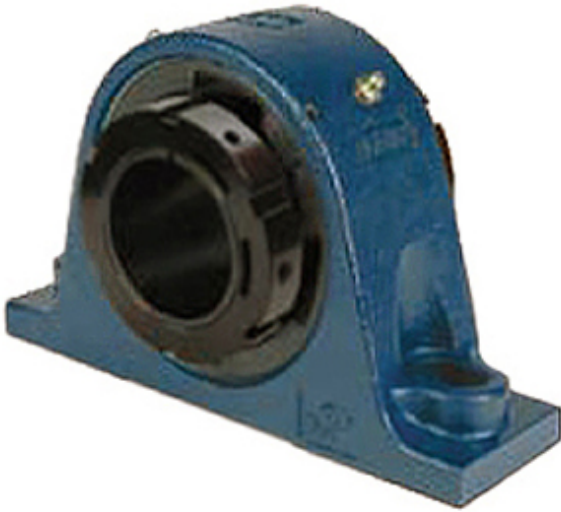




Zhejiang Huaxin bearing accessories C...



QMP13J208SEB Bearing 2D drawings and 3D CAD models

2.5 Inch | 63.5 Millimeter x 3.37 Inch | 85.598 Millimeter x 2.75 Inch | 69.85 Millimeter QM INDUSTRIES QMP13J208SEB Pillow Block Bearings

Bearing No. QMP13J208SEB

Category	Pillow Block Bearings
Inventory	0.0
Manufacturer Name	TIMKEN
Minimum Buy Quantity	N/A
Weight	8.626
EAN	0883450081450
Product Group	M06288
Number of Mounting Holes	2
Mounting Method	Eccentric Collar
Housing Style	2 Bolt Pillow Block
Rolling Element	Spherical Roller Bearing
Housing Material	Cast Steel
Expansion / Non-expansion	Expansion
Mounting Bolts	5/8 Inch
Relubricatable	Yes
Insert Part Number	22213
Seals	Double Lip Nitrile Rubber
Housing Configuration	1 Piece Solid
Inch - Metric	Inch
Other Features	Double Row
Long Description	2 Bolt Pillow Block; 2-1/2" Bore; 2-3/4" Base to Center Height; Eccentric Collar Mount; Spherical Roller Bearing; 6-7/8" Minimum



Zhejiang Huaxin bearing accessories C...

	Bolt Spacing; 8-5/8" Bolt Spacing Maximum; Relubric
Category	Pillow Block
UNSPSC	31171511
Harmonized Tariff Code	8483.20.40.80
Noun	Bearing
Keyword String	Pillow Block
Manufacturer URL	http://www.qmbearings.com
Manufacturer Item Number	QMP13J208SEB
Weight / LBS	22
B	2.75 Inch 69.85 Millimeter
Bolt Spacing Minimum	6.875 Inch 174.625 Millimeter
d	2.5 Inch 63.5 Millimeter
Bolt Spacing Maximum	8.625 Inch 219.075 Millimeter
Nominal Bolt Center to Center	7.8 Inch 199.2 Millimeter
D	3.37 Inch 85.598 Millimeter
Actual Bolt Center to Center	0 Inch 0 Millimeter