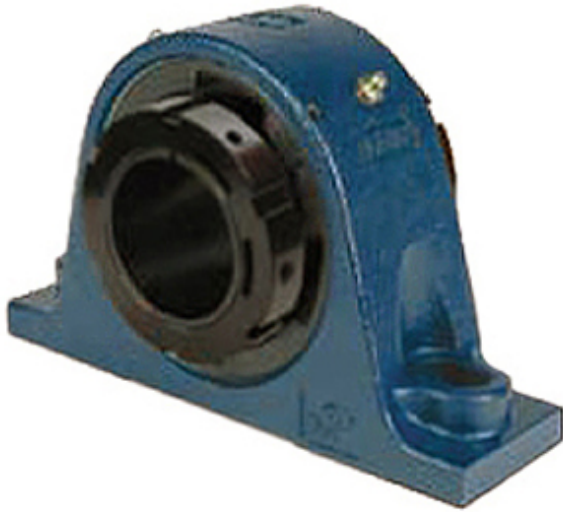




Zhejiang Huaxin bearing accessories C...



QAAP15A211SM Bearing 2D drawings and 3D CAD models

2.688 Inch | 68.275 Millimeter x 4.74 Inch |
120.396 Millimeter x 3.125 Inch | 79.38 Millimeter
QM INDUSTRIES QAAP15A211SM Pillow Block
Bearings

Bearing No. QAAP15A211SM

Category	Pillow Block Bearings
Inventory	0.0
Manufacturer Name	TIMKEN
Minimum Buy Quantity	N/A
Weight	10.442
EAN	0883450009553
Product Group	M06288
Number of Mounting Holes	2
Mounting Method	Concentric Collar
Housing Style	2 Bolt Pillow Block
Rolling Element	Spherical Roller Bearing
Housing Material	Cast Steel
Expansion / Non-expansion	Non-expansion
Mounting Bolts	3/4 Inch
Relubricatable	Yes
Insert Part Number	22215
Seals	Triple Lip Nitrile Rubber
Housing Configuration	1 Piece Solid
Inch - Metric	Inch
Other Features	Double Row Double Collar With Set Screw
Long Description	2 Bolt Pillow Block; 2-11/16" Bore; 3-1/8" Base to Center Height; Concentric Collar Mount;



Zhejiang Huaxin bearing accessories C...

	Spherical Roller Bearing; 7-7/8" Minimum Bolt Spacing; 9-5/8" Bolt Spacing Maximum; Relub
Category	Pillow Block
UNSPSC	31171511
Harmonized Tariff Code	8483.20.40.80
Noun	Bearing
Keyword String	Pillow Block
Manufacturer URL	http://www.qmbearings.com
Weight / LBS	28
D	4.74 Inch 120.396 Millimeter
Bolt Spacing Maximum	9.625 Inch 244.475Millimeter
B	3.125 Inch 79.38 Millimeter
Actual Bolt Center to Center	0 Inch 0Millimeter
Bolt Spacing Minimum	7.875 Inch 200.025Millimeter
d	2.688 Inch 68.275 Millimeter
Nominal Bolt Center to Center	8.8 Inch 223 Millimeter