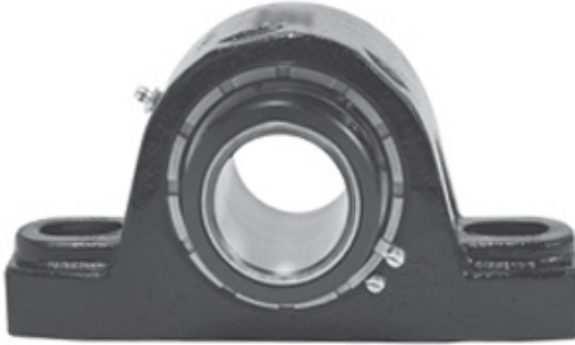




## Zhejiang Huaxin bearing accessories C...



KEP5215 Bearing 2D drawings and 3D CAD models

2.938 Inch | 74.625 Millimeter x 4.875 Inch |  
123.83 Millimeter x 3.125 Inch | 79.38 Millimeter  
REXNORD KEP5215 Pillow Block Bearings

Bearing No. KEP5215

Category	Pillow Block Bearings
Inventory	0.0
Manufacturer Name	REXNORD
Minimum Buy Quantity	N/A
Weight	13.62
EAN	0698210914004
Product Group	M06288
Number of Mounting Holes	2
Mounting Method	Concentric Collar
Housing Style	2 Bolt Pillow Block
Rolling Element	Spherical Roller Bearing
Housing Material	Cast Iron
Expansion / Non-expansion	Non-expansion
Mounting Bolts	3/4 Inch
Relubricatable	Yes
Insert Part Number	5215U
Seals	Light Contact
Housing Configuration	1 Piece Solid
Inch - Metric	Inch
Other Features	Double Row   Double Collar   Heavy Duty   With Set Screw
Long Description	2 Bolt Pillow Block; 2-15/16" Bore; 3-1/8" Base to Center Height; Concentric Collar Mount;



## Zhejiang Huaxin bearing accessories C...

	Spherical Roller Bearing; 7-13/16" Minimum Bolt Spacing; 9-3/4" Bolt Spacing Maximum; Rel
Category	Pillow Block
UNSPSC	31171511
Harmonized Tariff Code	8483.20.40.80
Noun	Bearing
Keyword String	Pillow Block
Manufacturer URL	<a href="http://www.rexnord.com">http://www.rexnord.com</a>
Manufacturer Item Number	KEP5215
Manufacturer Internal Number	.
Weight / LBS	30
d	2.938 Inch   74.625 Millimeter
Actual Bolt Center to Center	0 Inch   0Millimeter
Nominal Bolt Center to Center	8.8 Inch   223 Millimeter
Bolt Spacing Minimum	7.813 Inch   198.44Millimeter
D	4.875 Inch   123.83 Millimeter
B	3.125 Inch   79.38 Millimeter
Bolt Spacing Maximum	9.75 Inch   247.65Millimeter